



东莞赛森特流体控制设备有限公司  
Dongguan Suncenter Fluid Control Equipment Co., Ltd

## Suncenter Oilfield chemical reagent injection pump

### Pneumatic chemical reagent injection booster system



Dongguan Suncenter Fluid Control Equipment Co., Ltd is the member company of Suncenter Group, which is located in Dongguan city of Guangdong province in China. With more than 15 years experiences in fluid pressure exchange and controlling field, we provide various kinds of pneumatic and hydraulic booster pumps, systems and solutions to the customers all over the world. Due to our best product quality, competitive price as well as excellent after-sales service, we have win a great reputation in the field.

#### **Our main products including:**

High Pressure Booster Pumps ( Gas Booster Pump, Air Driven Liquid Pump, Air Amplifiers)

High Pressure Systems (Gas/Liquid Booster System,Hydro test bench,Chemical injection system,CO2/FM200 filling machine, Tube Expanding Machine)

High Pressure Test Equipment(Hydraulic/Burst/Hydrostatic test machine,Cylinder test machine, Valve test bench,Impulse Testing Machine, etc.)

#### **Product Application**

Oil Industry, Gas Industry, Chemical Industry, Fire Fighting, Research Institutions etc.

#### **Our service**

13 months' free warranty since the purchasing date and free technical support during lifetime



# 东莞赛森特流体控制设备有限公司

Dongguan Suncenter Fluid Control Equipment Co., Ltd

## Suncenter DLS Series Pneumatic (Air driven) Liquid Pressure Booster System

### DLS series chemical reagent injection pump

SUNCENTER- Liquid pump systems are compact and delicacy solution tailored to customer specific requirements with air driven liquid pumps as well as all accessories to be fitted and installed on the frame or in closed cabinet.

To operate this system, the pressure gauges, valves and pressure regulators have to be fitted on panels. The outlet pressure is easily to be set through a simple air regulator. The pump stops automatically when this end pressure is reached and restarts with a slight drop in the outlet pressure or an increase in the air drive pressure. SUNCENTER Hydraulic power packs are available with wide range of pressure ratios make these series of pumps ideal for powering a variety of oil/hydraulic operations. **The maximum operating pressure up to 640 MPa.**

As the pressure will be generated by means of a pneumatically operated pump, the electric connection will not be necessary. To operate this system, the air driven liquid pump have to be equipped with the air control unit combined filter and water separator, pressure-regulating valve, pressure control gauge as well as manual relieve valve. In this operation, the pump will be mounted to the stainless steel tank in the closed cabinet in a compact and space saving manner. Pressure gauges, valves and pressure regulators will be fitted on panel.

The desired operating pressure can be attained by adjusting the driving air pressure. When the driving air pressure and the output pressure reach the balance, the pump stops filling pressure and the output pressure stays at the preset value. This hydraulic unit can be used for all kinds of pressure testing and test tools for research and test institutes or for other functions requiring a determined pressure.

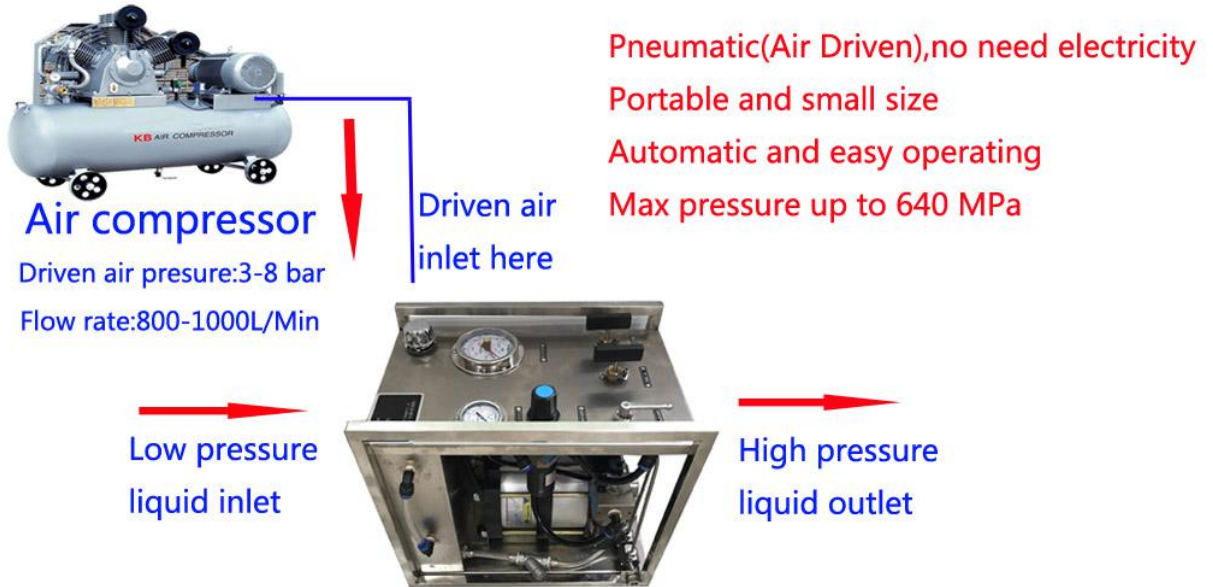
### Key features include:

- Compressed Air driven - no electricity required (connect to normal air compressor)
- In order to extend the lifetime of the pump, the driving air pressure should not be higher than **8 bar**
- No airline lubricator required
- Pressures to 640Mpa (6400 bar)
- Wide range of models with different ratios
- Built-in-cooling on most models
- Easy to install, operate and maintain
- Best price / performance ratio
- No heat, flame or spark risk and explosion proof
- Automatic pressure holding, whatever the cause of the pressure drop, the Suncenter pump will automatically start, keep the loop pressure constant



东莞赛森特流体控制设备有限公司  
Dongguan Suncenter Fluid Control Equipment Co., Ltd

## Suncenter liquid booster system working circuit

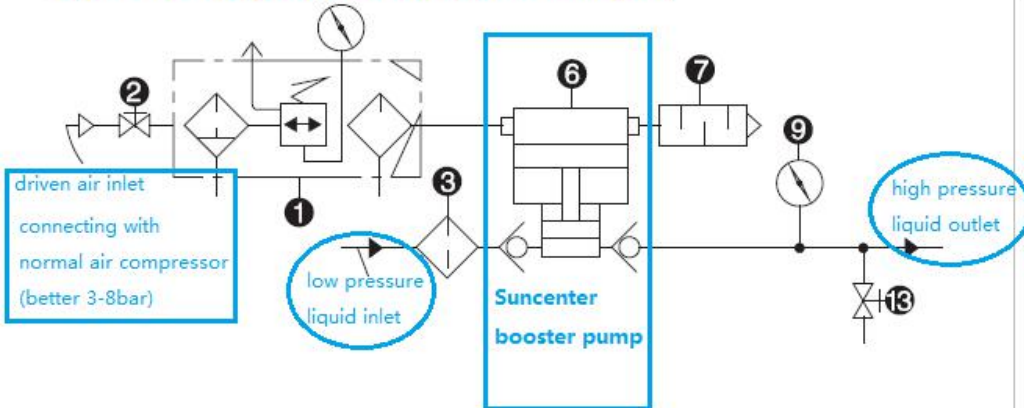


Suncenter liquid booster system

Boost Medium: Water/Oil/Chemical liquid

For hydraulic/hydrostatic test or chemical injection

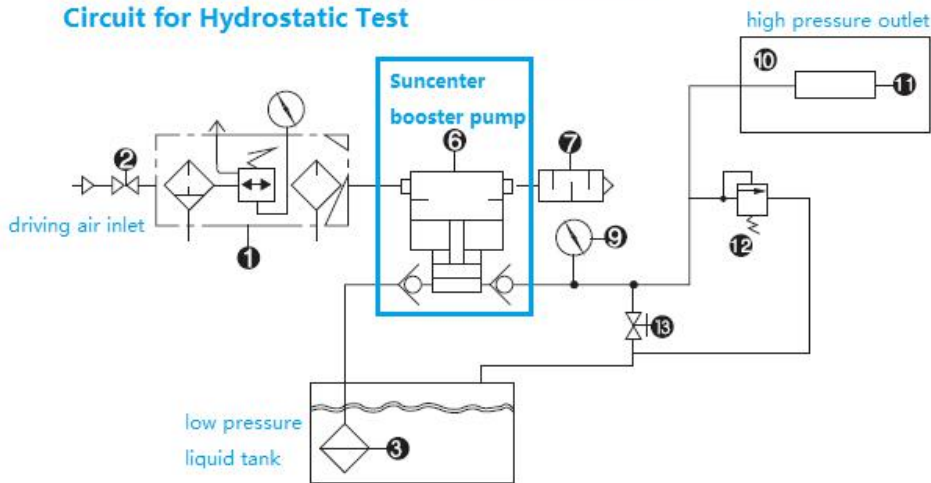
Typical circuit diagram for Air driving liquid booster pump



Number explanation

- ① F.R.L combination
- ② Driving air switch
- ③ Liquid filter
- ⑥ Booster pump
- ⑦ Muffler
- ⑨ Pressure gage
- ⑩ Testing cabinet
- ⑪ Tested part
- ⑫ Safety relief valve
- ⑬ unloading valve

Circuit for Hydrostatic Test





# 东莞赛森特流体控制设备有限公司

Dongguan Suncenter Fluid Control Equipment Co., Ltd

## DLS series chemical reagent injection pump-The hottest selling Model C cabinet

### **Product introduction:**

Chemical reagent injection system is widely used in the world oil production and processing industry. Using the Air / gas driven system to filling chemicals to the oil wells, gas wells and pipelines, restore the normal work of the oil (gas) well, also can be used for delivery of raw materials to the high-pressure reaction kettle quantitative.

The effect of the chemical injection system is to use a chemical injection system to return or inject a liquid chemical agent into the fluid at high pressure or low pressure. To return fluid injection of chemical agents usually using methanol, preservatives, deoxidizer, drilling fluid additive (caustic soda and liquid polymer) and defoaming agent. Chemical injection system is a relatively simple system, its suction end is using pneumatic piston pump, the pump and chemical agents are connected to the container. And the discharge end is directly connected with the pipeline.

### **Application range:**

- 1 oil well
- 2 gas well
- 3 reaction kettle

### **The standard liquid pump system including following parts:**

Air -driven liquid booster pump (DGG/DGGD/2DGGD Three series for choosing)

Stainless steel material cabinet

F.R.L combination for driven air (adjusts air pressure, add lubricating oil and water filter)

Driven air switch (Pump starting switch), driven air pressure gauge, liquid tank

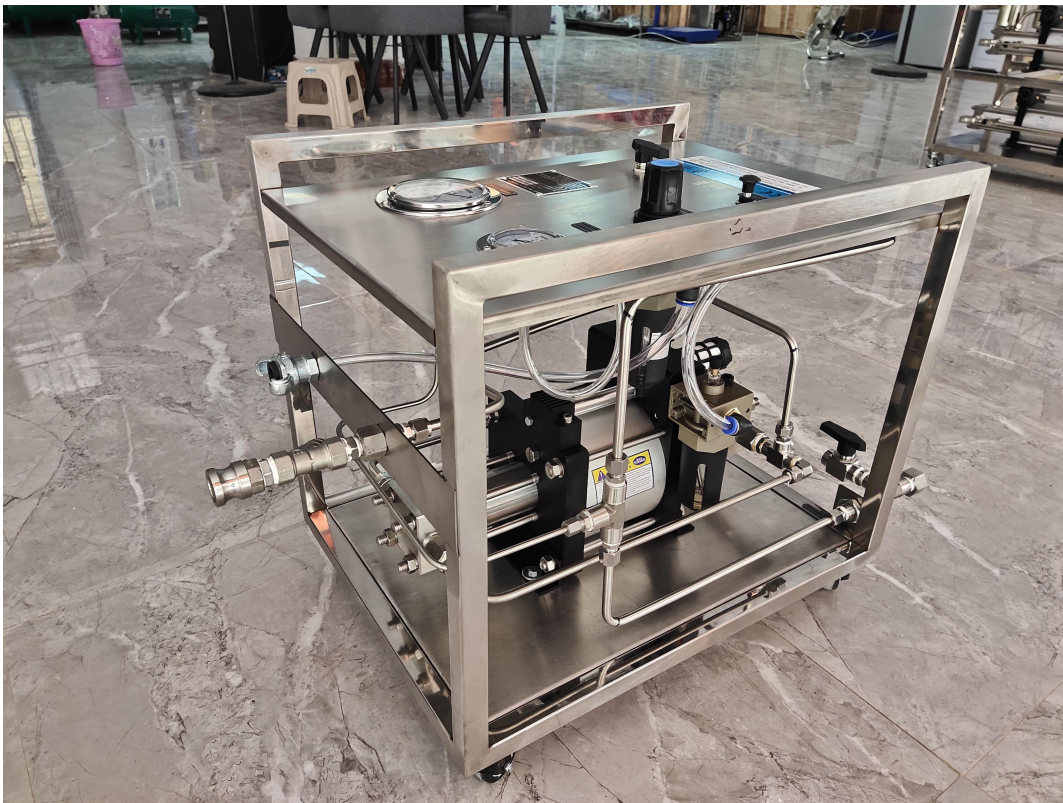
Liquid inlet/outlet switch, high pressure liquid gauge, unloading valve, interconnecting pipes etc.

And we could also customize it according to clients' special requirement.



# 东莞赛森特流体控制设备有限公司

Dongguan Suncenter Fluid Control Equipment Co., Ltd





# 东莞赛森特流体控制设备有限公司

Dongguan Suncenter Fluid Control Equipment Co., Ltd

## DLS-DGG series Technical specification

Model	Pressure Ratio	Driven air pressure $P_L$	Formula to calculate outlet pressure	MAX Outlet Pressure(bar)*	Driven air inlet port	High pressure Outlet port	MAX Flow (L/min)**
DLS-DGGD4	4:1	3-8 bar	$4XP_L$	32	G 1/2	NPT/ZG	70.0
DLS-DGG6	6:1	3-8 bar	$6XP_L$	48	G 1/2	NPT/ZG	29.91
DLS-DGG10	10:1	3-8 bar	$10XP_L$	80	G 1/2	NPT/ZG	18.84
DLS-DGG16	16:1	3-8 bar	$16XP_L$	128	G 1/2	NPT/ZG	12.42
DLS-DGG28	28:1	3-8 bar	$28XP_L$	224	G 1/2	NPT/ZG	7.11
DLS-DGG40	40:1	3-8 bar	$40XP_L$	320	G 1/2	NPT/ZG	4.89
DLS-DGG64	64:1	3-8 bar	$64XP_L$	512	G 1/2	NPT/ZG	3.08
DLS-DGG80	80:1	3-8 bar	$80XP_L$	640	G 1/2	NPT/ZG	2.44
DLS-DGG100	100:1	3-8 bar	$100XP_L$	800	G 1/2	NPT/ZG	1.92
DLS-DGG130	130:1	3-8 bar	$130XP_L$	1040	G 1/2	NPT/ZG	1.47
DLS-DGG175	175:1	3-8 bar	$175XP_L$	1400	G 1/2	NPT/ZG	1.14
DLS-DGG255	255:1	3-8 bar	$255XP_L$	2040	G 1/2	NPT/ZG	0.75
DLS-DGG400	400:1	3-8 bar	$400XP_L$	3200	G 1/2	NPT/ZG	0.48
DLS-DGG510	510:1	3-8 bar	$510XP_L$	4080	G 1/2	NPT/ZG	0.65
DLS-DGG800	800:1	3-8 bar	$800XP_L$	6400	G 1/2	NPT/ZG	0.42

The outlet liquid pressure=Driven air pressure\*boost ratio

In order to extend the lifetime of the pump, the driving air pressure should not be higher than 8 bar



# 东莞赛森特流体控制设备有限公司

Dongguan Suncenter Fluid Control Equipment Co., Ltd

## DLS-DGGD series Technical specification

Model	Pressure Ratio	Driven air pressure $P_L$	Formula to calculate outlet	MAX Outlet Pressure(bar)*	Driven air inlet port	High pressure Outlet port	MAX Flow (L/min)**
DLS-DGGD4	4:1	3-8 bar	$4XP_L$	32	G 1/2	NPT/ZG	70.00
DLS-DGGD6	6:1	3-8 bar	$6XP_L$	48	G 1/2	NPT/ZG	48.60
DLS-DGGD10	10:1	3-8 bar	$10XP_L$	80	G 1/2	NPT/ZG	30.61
DLS-DGGD16	16:1	3-8 bar	$16XP_L$	128	G 1/2	NPT/ZG	19.73
DLS-DGGD28	28:1	3-8 bar	$28XP_L$	224	G 1/2	NPT/ZG	11.30
DLS-DGGD40	40:1	3-8 bar	$40XP_L$	320	G 1/2	NPT/ZG	7.69
DLS-DGGD64	64:1	3-8 bar	$64XP_L$	512	G 1/2	NPT/ZG	4.94
DLS-DGGD80	80:1	3-8 bar	$80XP_L$	640	G 1/2	NPT/ZG	3.96
DLS-DGGD100	100:1	3-8 bar	$100XP_L$	800	G 1/2	NPT/ZG	3.13
DLS-DGGD130	130:1	3-8 bar	$130XP_L$	1040	G 1/2	NPT/ZG	2.40
DLS-DGGD175	175:1	3-8 bar	$175XP_L$	1400	G 1/2	NPT/ZG	1.81
DLS-DGGD255	255:1	3-8 bar	$255XP_L$	2040	G 1/2	NPT/ZG	1.23
DLS-DGGD400	400:1	3-8 bar	$400XP_L$	3200	G 1/2	NPT/ZG	0.79

The outlet liquid pressure=Driven air pressure\*boost ratio

In order to extend the lifetime of the pump, the driving air pressure should not be higher than 8 bar





# 东莞赛森特流体控制设备有限公司

Dongguan Suncenter Fluid Control Equipment Co., Ltd

## DLS-2DGGD series technical specification

Model	Pressure Boost Ratio	Driven air pressure $P_L$	Formula to calculate outlet pressure	MAX Outlet Pressure(bar)*	Liquid inlet Connection	Liquid outlet Connection	MAX Flow (L/min)**
DLS-2DGGD10	10:1	2-8 bar	$10XP_L$	80	NPT1/2	NPT1/2	61.22
DLS-2DGGD16	16:1	2-8 bar	$16XP_L$	128	NPT1/2	NPT1/2	39.46
DLS-2DGGD28	28:1	2-8 bar	$28XP_L$	224	NPT1/2	NPT1/2	22.60
DLS-2DGGD40	40:1	2-8 bar	$40XP_L$	320	NPT1/2	NPT3/8	15.38
DLS-2DGGD64	64:1	2-8 bar	$64XP_L$	512	NPT1/2	NPT3/8	9.88
DLS-2DGGD80	80:1	2-8 bar	$80XP_L$	640	NPT1/2	NPT3/8	7.92
DLS-2DGGD100	100:1	2-8 bar	$100XP_L$	800	NPT1/2	NPT3/8	6.26
DLS-2DGGD130	130:1	2-8 bar	$130XP_L$	1040	NPT1/2	M14*1.5	4.80
DLS-2DGGD175	175:1	2-8 bar	$175XP_L$	1400	NPT3/8	M14*1.5	3.62
DLS-2DGGD255	255:1	2-8 bar	$255XP_L$	2040	NPT1/4	M14*1.5	2.46
DLS-2DGGD400	400:1	2-8 bar	$400XP_L$	3200	NPT1/4	M14*1.5	1.58

The outlet liquid pressure=Driven air pressure\*boost ratio

In order to extend the lifetime of the pump, the driving air pressure should not be higher than 8 bar



# 东莞赛森特流体控制设备有限公司

Dongguan Suncenter Fluid Control Equipment Co., Ltd

## How to Select Suncenter Air Driven Liquid Boosters/Systems?

In order to choose suitable liquid booster pump or systems for you, please kindly reply us the following questions:

1. What is the liquid you want to booster?
2. What outlet liquid pressure do you want?(     )bar
3. What driven air pressure (of your air compressor) can you offer?(     )bar,  
Because our booster is completely air operated and no need any electricity
4. What outlet liquid flow rate do you need?(     )L/min

If you are interested in any of our products, please feel free to contact us.  
We could also make the customized products according to your special requirements.

Contact: William  
Overseas Sales Manager  
Skype: suncenterwilliam  
Email: [william@suncenter-cn.com](mailto:william@suncenter-cn.com)

**Suncenter Group Co., Ltd**

**Dongguan Suncenter Fluid Control Equipment Co., Ltd**

Tel:0086-769-33216915 Fax:0086-769-33818383

Website: [www.suncenter-cn.com](http://www.suncenter-cn.com) [www.suncentergroup.com](http://www.suncentergroup.com)

ADD: No. 285 Guantai Road, Yuanwubian, Nancheng District, Dongguan City, Guangdong, China