



FUSHI WOOD GROUP

FUSHI@FUSHIWOOD.COM



SHOUGUANG FUSHI WOOD CO.,LTD.

ADD:Fushi street,East city industrial zone,Shouguang,Shandong,CHINA.

TEL:0086-0536-5678898

FAX:0086-0536-5671769

E-MAIL:FUSHI@FUSHIWOOD.COM

CE,ISO9001, ISO14001, CARB, SONCAP CERTIFIED



CHINA FIRST & BEST LVL MANUFACTURER



About FuShi

In 1987, Fushi Wood Group was founded as supplier for world leading furniture company Ashley. In 2001, the group produced the first LVL (Laminated Veneer Lumber) from China, and keeps to be leading Asian LVL manufacturer in accordance with OSHA, AUS 1577 and EN 13377.

Now, the group has over 2300 employees and 10 factories in Shandong Province of China, properties covering land 466,200 square meters, business scope successfully involved in real estate, plank, furniture and chemistry. Plank business involved in LVL, Plywood, H20, MDF, PB & OSB with production capability yearly over 300,000 cubic meters which are certified by ISO 9000, ISO14001, SONCAP, CARB of U.S and CE of Europe..

Products safety and quality are central to our brand equity and are the reason partners and clients trust us. The mission of Fushi Wood Group is to ensure, through quality planning and execution, that all Fushi products deliver the desired consumer experience and occupational safety. Our global quality assurance approach is a collaborative effort between quality professionals in our corporate offices, as well as on the ground around the world in the markets where we do business.

We are committed to learning and continuous improvement. We will continue to seek out and implement best practices in quality management to be worthy of the trust our consumers.



Group Structure



Group Head Quarter



LVL Scaffolding Plant



LVL H2O Plant



FF Plywood Plant



Commercial Plywood Plant



MDF Plant



Certificates

CERTIFICATE

Number: BV-COC-118119

Issued: September 24th, 2013
Valid until: September 23rd, 2018

Bureau Veritas Certification certifies that the company:

SHOUGUANG FUSHI WOOD CO., LTD

has implemented a FSC product groups control system according to the Forest Stewardship Council certification system, in the following location:

SHOUGUANG FUSHI WOOD CO., LTD
EAST CITY INDUSTRY ZONE, SHOUGUANG CITY, SHANDONG PROVINCE, CHINA
262705 - SHOUGUANG - CHINA

for its activities concerning:

Manufacture and sales of wood product certified FSC 100% and FSC Mix*

*Updated list of products & species on the FSC database (fsc.org)

This company has been assessed and found to conform to the requirements of the:

FSC Chain of Custody standard, Ref.: FSC-STD-40-004, v. 2.1

This certificate is valid for a 5 years period.

September 25th, 2013

Fabien JOLY DE BRESILLON
Bureau Veritas Chain Certification Director

The validity of this certificate and its conditions are subject to the following:
This certificate is not valid for products that a competent control authority has identified as FSC products of FSC products that should be avoided or used by the manufacturer under any circumstances. The scope of this certificate does not include FSC claims to be clearly stated on invoices and all other documents.
Approved office: Bureau Veritas Certification Head Office, 1071, Boulevard de la Woluwe, 1200 Brussels, Belgium.
FSC member: FSC - C016666 - Bureau Veritas Certification, S.A.
Management Plan: Bureau Veritas Bureau, a Full-Body Control System.
At all of the conditions in addition that are listed in the scope of the certificate are fulfilled and on request to Bureau Veritas Certification.
This certificate remains the property of Bureau Veritas Certification, it cannot be reproduced and the certificate itself shall be returned to Bureau Veritas Certification.
At certificate number BV-COC-118119, the following apply:
The certificate is issued in accordance with Bureau Veritas Certification Chain of Custody Standard FSC-STD-40-004.

NOYF00311204-10001.0-8806.1



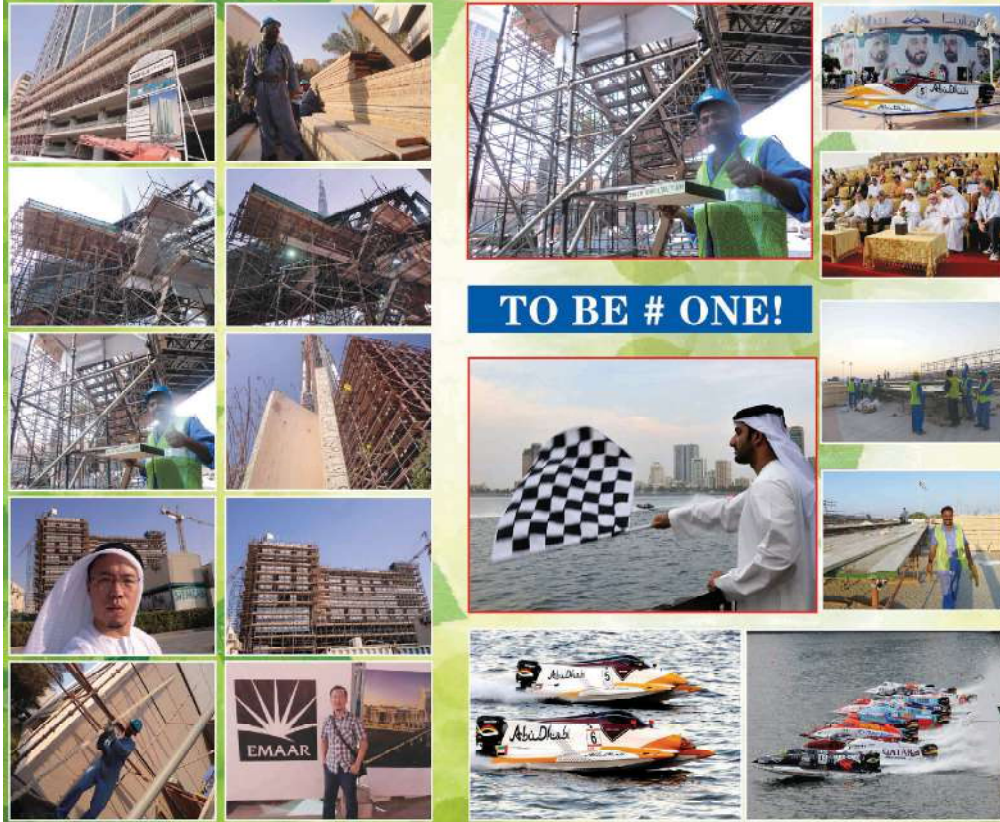


LVL PROJECTS



LVL SCAFFOLDING PROJECTS

PROJECT FOMULAR ONE H2O



LVL PROJECTS



KSA PROJECTS

BAHRAIN PROJECTS





Commercial Plywood

Description

- Size: 1220*2440, 1250*2500MM
- Thickness: 2.5-30MM
- Core: Poplar, Pine, Birch, Hardwood, Combi
- Face and Back: Okoume, Bintangor, Poplar, Pine, Hardwood, Birch, Ash, Oak, Technical Veneer
- Glue: E2/E1/E0/MR/Melamine/WBP
- Grade: BB/BB, BB/CC, CC/DD, or Utility grade
- MC: 6-14% • Glue: E1, E2, E0, Melamine, WBP
- Density: 530-730 KGS/CBM
- Formaldehyde: E0≤0.5mg/L, E1≤1.5mg/L, E2≤5mg/L
- Certificate: CARB/CE/ISO9001



Hot Press Machine



Veneer Drying Machine



Cargo loding in Port



Registered Brand BQ



Commercial Plywood Projects



In Fushi Warehouse



Break Bulk Loaded on board



Cargo Arrived at Client's Warehouse



In Client's Warehouse



Celebration Party With African partners



With partners



Film Faced Plywood

Description

- Size: 1220*2440mm, 1250*2500mm or as request.
- Thickness: 9-25mm
- Core: Hardwood, Poplar, Combi, Birch etc
- Film: Black, Brown
- Glue: MR/WBP/MELAMINE
- Usage: Construction
- Density: 530-730KGS/CBM
- Cycle Life: 10-30 times
- MC: below 14%
- Grade: One time / two times hot press.



Registered Brand BQ



Processing Lines



In our warehouse



Film Paper Plant



Film Faced Plywood Projects



KSA Residencial Projects



Break Bulk to GCC



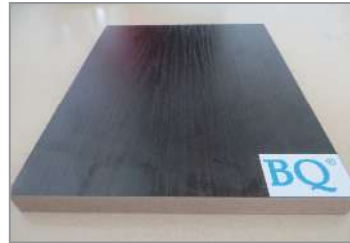
Project in UAE



MDF / HDF

Description

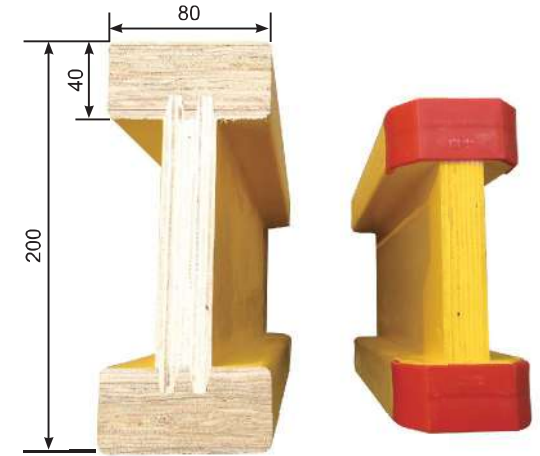
- Size:1220*2440*2.5-30mm, 1830*2440*2.5-25mm , 1830*3660*16mm or custermized.
- Glue: E1/E2/E0
- Density: 730~900kgs/m3
- Raw Material: Poplar, Hardwood, Pine Etc.
- MC: 4-9%
- Internal Bonding(Mpa): >0.55
- Modulus of elasticity:>3700Mpa
- Water absorption rate:≤10%
- Usage: For furniture(door, bed etc), Flooring manufacturing, Decoration, Packing.
- Formaldehyde emission standard: E1/E2/E0
- Melamine paper color:White, Black, Yellow, Red, Beech, Cherry, Maple, Pine, Teak.Etc.



LVL H20 I-Beam

Description

- Raw Material: Pine LVL For Flange, Poplar Plywood For Web.
- Glue:100%WBP Phenolic Glue
- Density: 5.0-6.0kg/M
- Size:Flange:40MM*80MM*Length Web:27MM*150MM*Length Height:200MM
- Water Content: 5-12%
- Length:1-12M (Asia Record)
- Painting: Yellow Waterproof Painting Or As Per Request
- Usage: Formwork



Each Product Surpass International Standard EN 13377



TEST REPORT

No. : SC121221751
Date : Dec. 20, 2012
Page: 2 of 4

Test conducted: EN 13377: 2002 Prefabricated timber formwork beams – Requirements, classification and assessment

I. Sample Detail

Test Item	Sample Dimension		
	L	b	H
Shear Resistance (V)	1500mm	80mm	200mm
Bending Resistance (M)	3300mm	80mm	200mm
Bearing Resistance (R _c)	3000mm	80mm	200mm

II. Test Result

Test Item	Test Result	Failure Location
Shear Resistance (V)	27.71 kN	Middle part
Bending Resistance (M)	15.75 kNm	Finger joint
Bearing Resistance (R _c)	71.07 kN	Finger joint
Bending Stiffness (E _I)	460 kNm ²	
Remark	Classification cannot be given based on single test result of each test item.	

***** To be continued*****

Reliability of testing (inspection report & certificate), please contact us of the below: Tel: 86-209998981442 or email: CN.Director@sgs.com