

# PRODUCT MANUAL

BEIJING NORTH TECH GLASS CO.,LTD  
NORTHGLASS HK INDUSTRIAL CO.,LTD

产品手册

BEIJING NORTH TECH GLASS CO.,LTD  
NORTHGLASS HK INDUSTRIAL CO.,LTD

Tel: +86 10 5848 0358 +86 10 8203 2601

Fax: +86 10 5221 4567 ext 6618

Web: [www.chinanorthglass.com](http://www.chinanorthglass.com)

E-mail: [admin@chinanorthglass.com](mailto:admin@chinanorthglass.com)

[sales@chinanorthglass.com](mailto:sales@chinanorthglass.com)





# On behalf of clients and innovative efforts

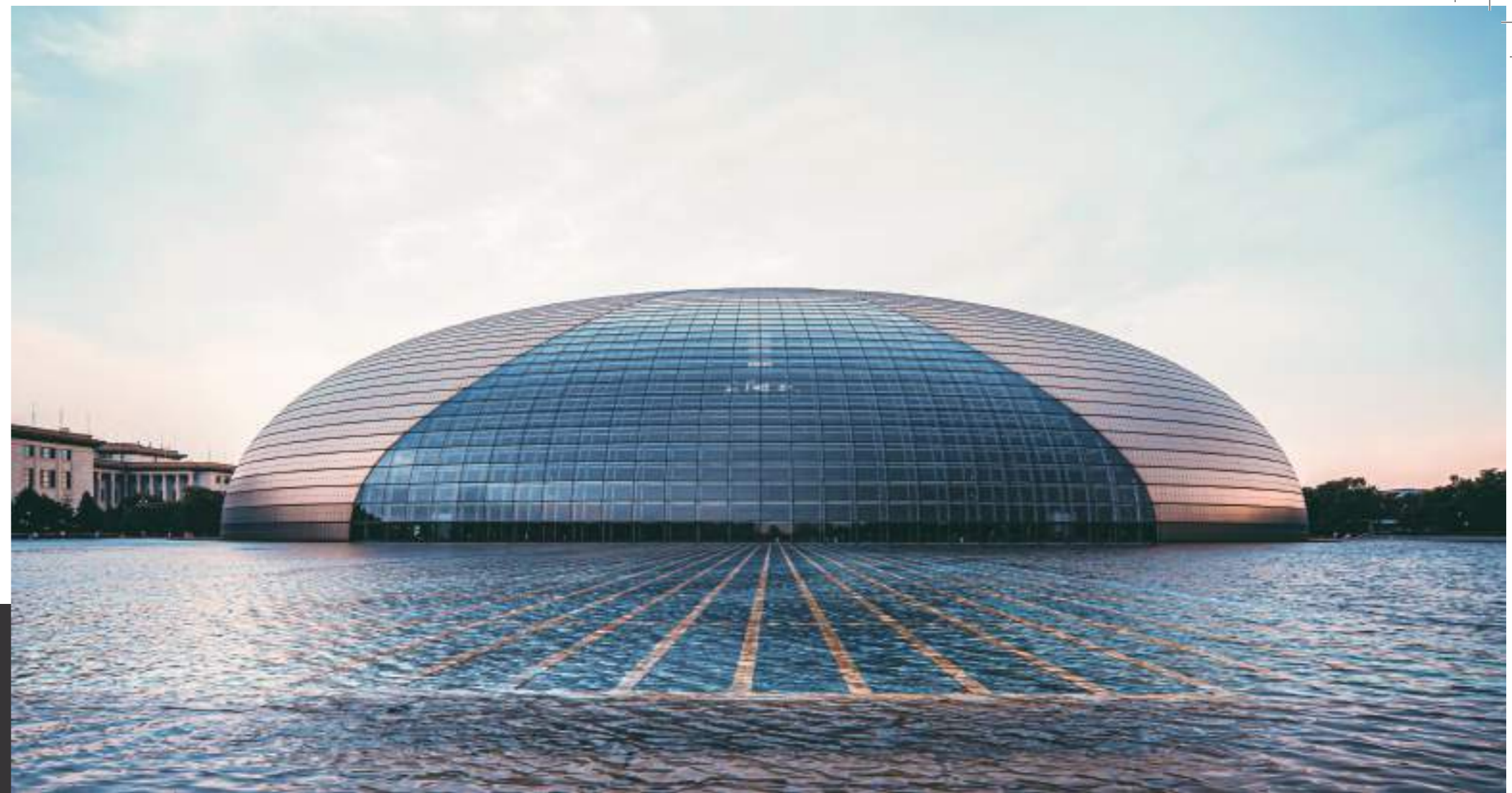
为客户利益而努力创新

# Introduction

Beijing North Tech Glass Co.Ltd (Beijing Northglass Technologies Co.Ltd), a professional glass supplier located in Capital city Beijing of China, has been engaged in glass R&D, supplying, marketing, sales for 30 years. Products have been exported to North America, Australia, Europe, Southeast Asia, South American, etc received good reputation from customers.

BNG is your single-source resource for innovative products, reliable service, valuable advice and technical expertise, for:

- Tempered Glass
- Reflective Glass
- Switchable smart Glass
- Bullet Proof Glass
- Laminated Glass
- Curved Glass
- Heavy Over-Size Glass
- Float and mirror glass
- Low E Insulating Glass
- Silk Screen Printing Glass
- Fire Proof Glass
- Frosted Glass



BNG adheres to "Quality First, Service First, Customer First" business philosophy. We have core professional team members dedicated to provide one-stop service serving customers at both home and abroad with integrated glass solution, high quality glass, and considerable customer service.

Quality and lead-time is key to your success. We strictly manage timing, obligate quality control from raw material, glass production, packaging to end loading process. Products has been successfully passed Australian standard AS/NZS2208, American Standard SGCC, IGCC, European standard EN12150 and other international glass quality standards.

To help customer to up-mostly achieve their success with competitive price and high glass quality is our goal. We are confident that with our extensive experience in glass industry, with profession, high sense of responsibility and great enthusiasm, we will build a long term partnership together.

Welcome you work with us and expect long-term cooperation.

## Partners





**Available:** Fully tempered glass, Heat strengthened glass, Heat Soaked glass, Curved tempered glass.

**Max. Size:** 3600mm × 18000mm

**Min. Size:** 300mm × 300mm

**Min.Radius:** 450mm

**Thickness Range:** 2mm–22mm

**Quality Standard:** EN12150, CCC, IGCC, CSI.

### 钢化玻璃

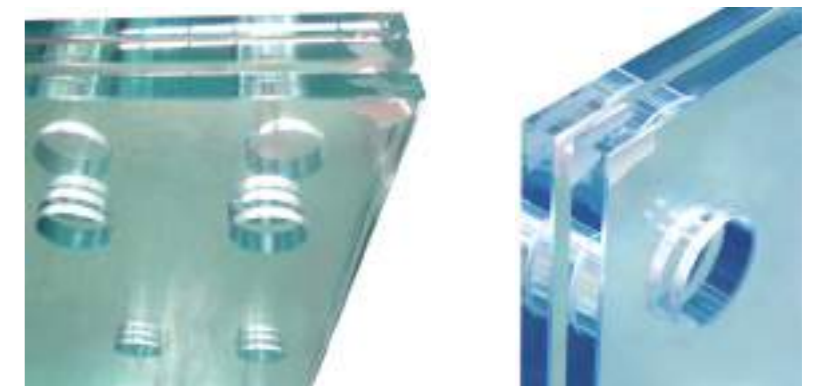
钢化玻璃具有良好的抗弯、抗冲击强度，是普通玻璃的 3-6 倍，表面应力值 >95Mpa。具有良好的热稳定性，能经受突变温差达 200-300℃，一般玻璃只能以受 70-100℃，一旦受到意外超强外力破裂时只会产生小颗粒，极大地减小了对人身及财产的损害隐患。我司生产大板平钢、弯钢玻璃。也可进行半钢、均质处理。

**最大规格:** 3600mm × 18000mm

**最小规格:** 300mm × 300mm

**最小曲率半径:** 450mm

**厚度范围:** 2mm-22mm



## Tempered Glass

Tempered glass has a very good performance of anti-curve, anti-hitting, 3 to 6 times better than normal glass. It can afford pressure over 95MPa on the surface. It has high stability even under temperature changing from 200 to 300 while normal glass can only afford change of 70-100. It becomes small sand shape if is broken under big force, which guarantee safety and less loss. Northglass has the largest jumbo sized flat/ curved tempered glass processing ability.



## Silk-Screen Printed Glass

Silk-Screen Printed Glass is produced by applying a thin layer of ceramic paint onto the glass surface by adopting silk-screen printing process. The coated glass is allowed to dry and then further subjected to tempering process with ceramic paint incorporated into the glass surface. The silk-screen printed glass being scratch resistant, acid and alkali resistant is a popular decorative safety glass.

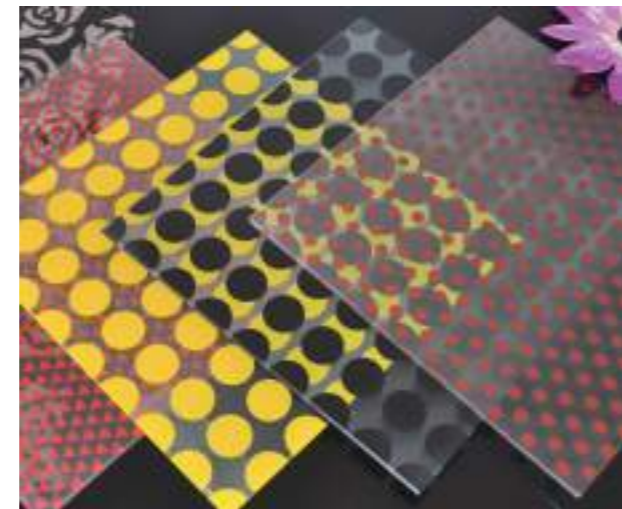
We have capability to develop various custom-designed pattern and color to meet the specific needs of customers. Black and white are the most popular standard colors.

### Production Capability

**Glass Thickness:** 2mm-22mm

**Maximum Size:** 3300mm x 18000mm

**Minimum Size:** 300mm x 300mm



## 彩釉玻璃

彩釉钢化玻璃是将无机釉料(又称油墨),印刷到玻璃表面,然后经烘干,钢化处理等过程,将釉料永久烧结于玻璃表面而得到的一种耐磨,耐酸碱的装饰性玻璃产品。

### 规格

厚度: 2mm-22mm

最大尺寸: 3300mm x 18000mm

最小尺寸: 300 x 300mm

06 \ \ PRODUCT MANUAL



## Color Digital Printing Glass

### Features:

No limitation of color and images

High precision, 720dpi

Free of printing board, shorten the production time

Has adjustable transmittance

Good chemical durable and weather resistant

### 数码彩色打印玻璃 性能

没有图案限制,没有色彩限制

高精度可达 720DPI

无需网版,生产周期短

透光率可控

化学耐久性和耐候性长

### 规格

最大尺寸: 3300mm x 18000mm

最小尺寸: 300 x 300mm

### Specification:

**Max:** 3300 x 18000mm

**Mini:** 300 x 300mm



## Laminated Glass

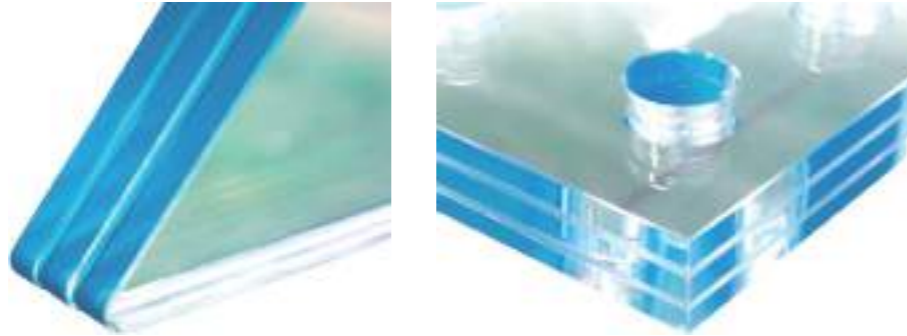
Laminated glass is constructed with two plies of glass permanently bonded together with one or more interlayers. The most important characteristics of laminated glass are fall-out protection due to the ability of the interlayer to support and hold the glass when broken as well as the reduced ability to penetrate the opening. The ability to resist various kinds of penetration is dependent upon a number of factors including thickness of the glass and the type of interlayer selected.

### Performance Features:

1. Have more aesthetic possibilities
2. Reduces noise transmission

### Interlayers Available:

Types: EVA, PVB, SGP (Sentry Glass Plus) , and so on



### Production Capability:

Max: 3600mm x 18000mm

Min: 300mm x 300mm



### 夹胶玻璃

夹胶玻璃是由两层玻璃与一层或多层夹层永久粘结而成。夹胶玻璃最重要的特点是由于夹胶胶片的能力，以支持和持有破碎时的玻璃脱落保护，以及减少穿透的能力。抗各种渗透的能力取决于许多因素，包括玻璃的厚度和选择的夹层类型。



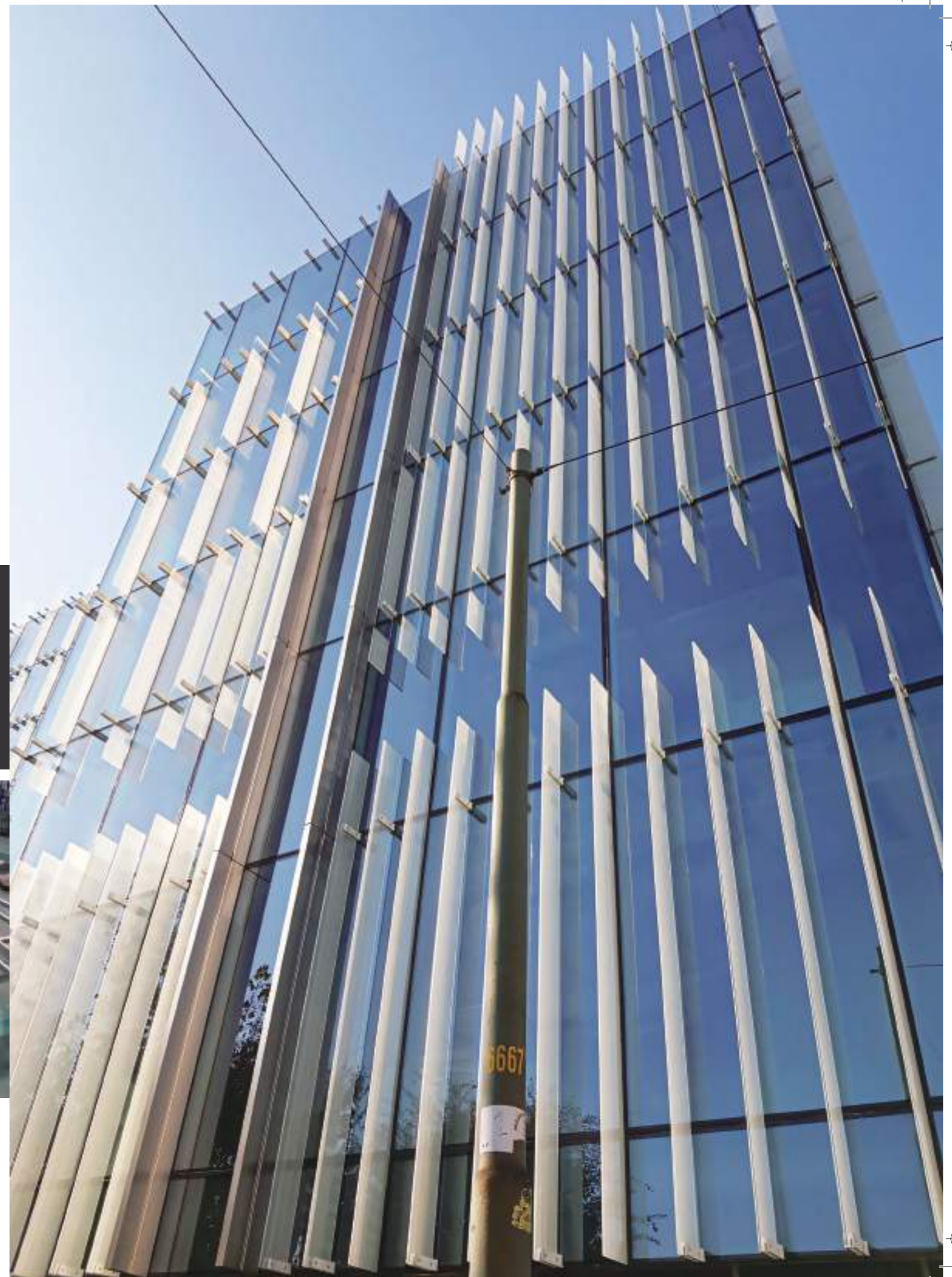
### 生产能力

最大尺寸: 3600mm x 18000mm

最小尺寸: 300 x 300mm

### Partners

SEFAR Vanceva Kuraray SentryGlas™ Expressions™





## Glass Railings

Glass is with different colors available while the fittings and handrails is authentic aluminum 6063 anodized or 316 stainless steel material.

### 玻璃围栏

玻璃围栏采用铝质或不锈钢材料的扶手，及五金件，适用于在碱性海边或空气潮湿之地保证多年不生锈。玻璃采用 PPG 或其他一线品牌高透玻璃，精抛光边处理。

## Insulating Glass

Insulating glass is constructed with two or more lites of glass and sealed air space (or filled with argon gas). It is used due to the improvement in solar performance it provides. The most significant improvement is thermal performance (u-value) which improves by approximately 50% when compared to a monolithic glass ply. This improvement occurs whether the glass is coated or uncoated.

### Performance Features

1. Increases curtain wall or window's thermal performance by reducing the heat gain or loss.
2. Absorb stress on the unit caused by thermal expansion and pressure
3. Excellent in heat and sound insulation.
4. Saving energy and environmental protection
5. Hoarfrosted and dew effect can be eliminated
6. High wind pressure strength

### Glass Size Capability

**Max:** 3600mm × 18000mm

**Min:** 300mm × 300mm

**Spacer Width:** 6mm, 9mm, 12mm, 15mm, 19mm, 22mm

### Available Low E

Low e from Guardian, Vitro, Saint Gobain, and so on..

1/4" V51-20 Monolithic  
1/4" (6mm) clear with V5-20 #2



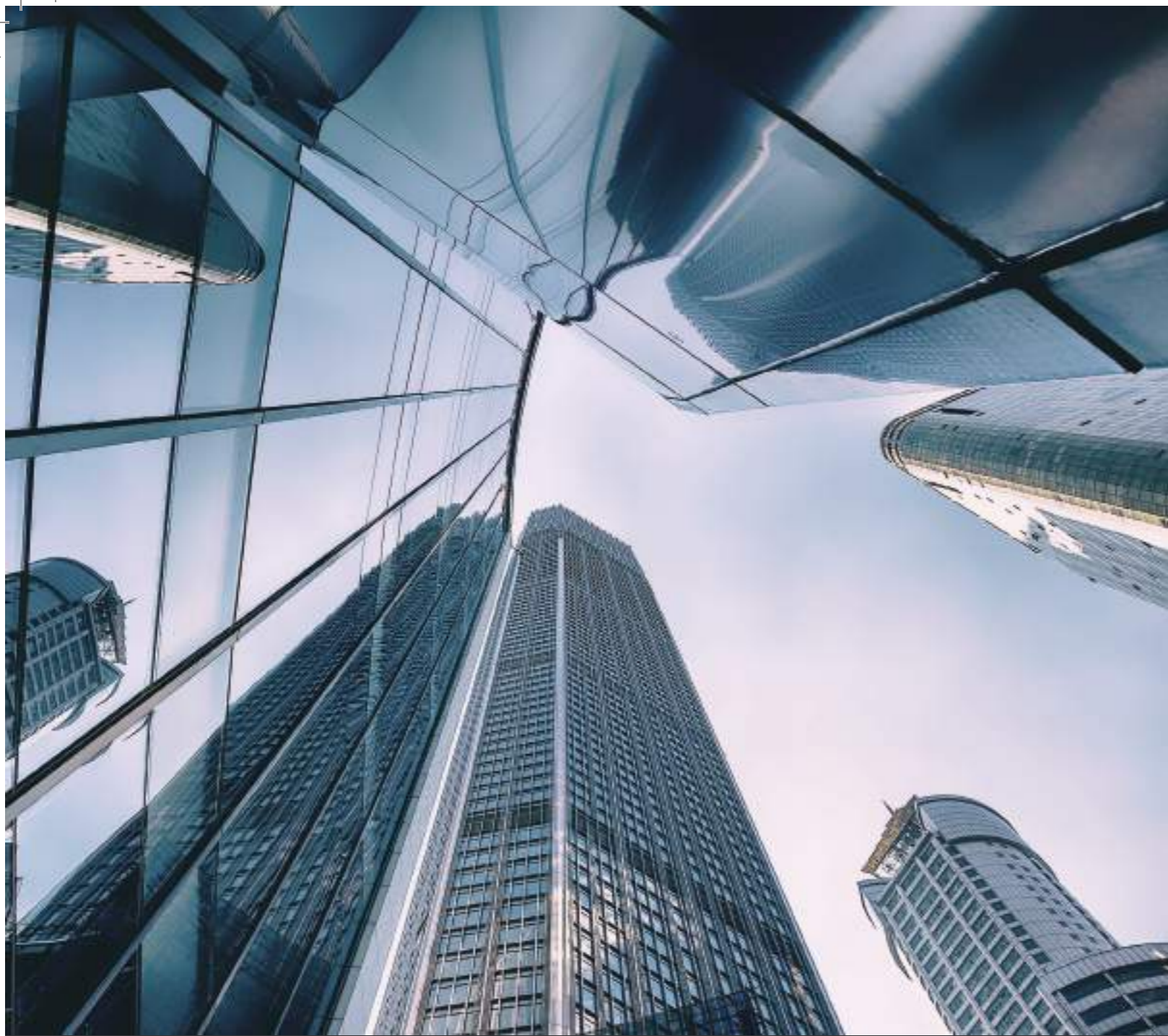
VLT	20%
Winter u-value	0.86
Summer u-value	0.75
SHGC	0.32

1" V51-20 Insulating  
1/4" (6mm) clear with V5-20 #2  
1/2" (13.2mm) airspace  
1/4" (6mm) clear



VLT	18%
Winter u-value	0.42
Summer u-value	0.43
SHGC	0.23





## Low-E Glass

Low-emissivity coated glass (also called Low-E glass) is made by vacuum magnetron sputtering coating device to form metal or compound films on the glass surface. The coatings have complex structure, so the coating machine should have very strong production capacity and high technical control precision.

Our Low-E glass products include high-transmittance Low-E, solar-control Low-E and double-silver Low-E. Our temperable Low-E glass, introduced specific materials and structures, is allowed to heat treat/temperable. Besides the offline low e, we supply on-line Low e, which is able to be used monolithically.

Besides, we are agent and process partner to AGC online Low e, include Planible G, Sunergy, SY-48 and so on.

### Color:

Neutral, light grey, silver grey, light blue, blue green, green, and other colors in different shades.

### Specifications:

**Maximum size:** 3300 × 18000 mm

**Minimum size:** 300 × 300 mm

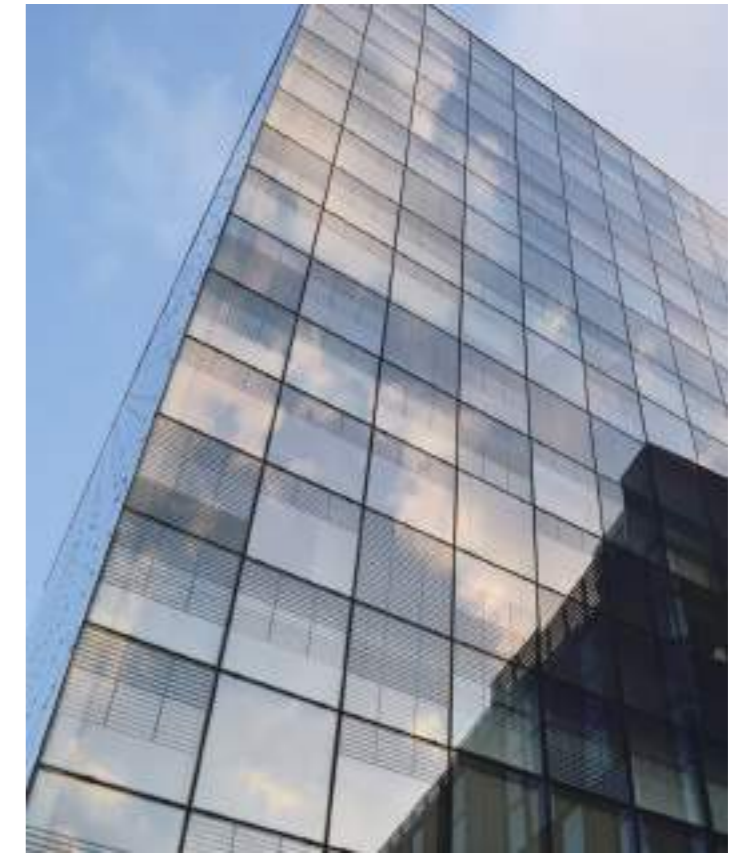
### Criterion:

GB/T 18915.2-2002;

UK BS6206:1981;

US ANSIZ97.1;

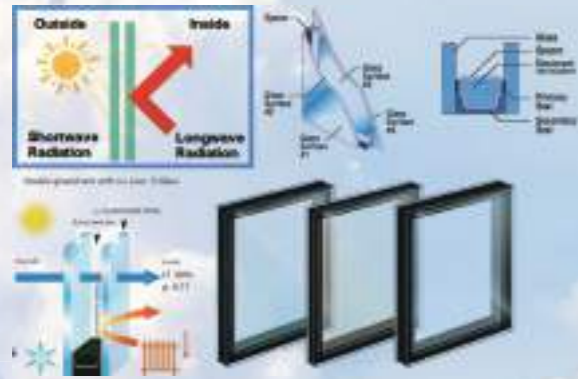
AUSTRILIA AS/NIS 2208-1996, and so on.





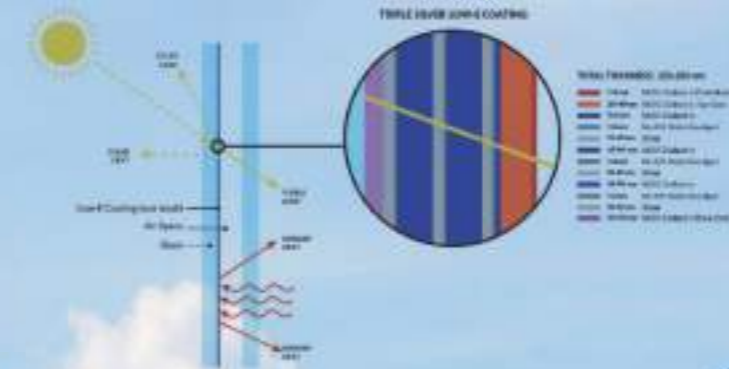
## Double Silver Low E Glass

Double Silver Low-E coated glass is one of the coated glass products with two layers of metal or other compound depositions on the surface. It has different transmittance to visible light and higher reflectance against far infrared. It has the characteristics of excellent shading coefficient, hence more effectively decrease solar radiant heat in summer, lowered U value, for further reducing heat dissipation in winter, moderate visible light transmittance to satisfy architectural design requirements and abundant color choices, so as to provide diversified aesthetic appearance options for architecture.



## Triple Silver Low E Glass

Triple Silver Low-E coated glass is one of the coated glass products with metal or other compound depositions on the surface. It has different transmittance to visible light and higher reflectance against far infrared. It has the characteristics of unprecedented combination of solar control and visible light transmittance, excellent spectrum selectivity performance, becomes the first choice of high-end green building and evolutionary energy efficient performance, greatly decrease the equipment costs of green buildings.



# Glass Parameter

## 1. Single Silver Low E Insulated Glass

Glass Configuration	Reflective Colour	Visible Light (%)			Solar Energy (%)		US Standard NFRC 2010				SC	SHGC
		Trans %	Reflectance		Trans	Ref	U-value (W/m <sup>2</sup> .K)					
			Outer	Inner			Air		Argon			
							Winter	Summer	Winter	Summer		
6NGOptiliteS1.10+12A+6C	Neutral	76	15.1	14.3	45.3	26.2	1.69	1.64	1.38	1.3	0.6	0.52
6NGOptiliteS1.10+16A+6C	Neutral	76	15.1	14.3	45.3	26.2	1.73	1.39	1.44	1.1	0.6	0.52
6NGOptiliteUS1.10+12A+6UC	Neutral	80	14.6	14.2	52.8	29.5	1.67	1.62	1.62	1.28	0.63	0.55
6NGOptiliteUS1.10+16A+6UC	Neutral	80	14.6	14.2	52.8	29.5	1.72	1.37	1.42	1.07	0.63	0.55
6NGOptiliteS1.16+12A+6C	Neutral	79	13	13	50	24	1.72	1.69	1.45	1.39	0.65	0.57
6NGOptiliteS1.16+16A+6C	Neutral	79	13	13	50	24	1.76	1.44	1.51	1.16	0.65	0.57
6NGOptiliteUS1.16+12A+6UC	Neutral	82	14	14	60	30	1.73	1.70	1.46	1.40	0.71	0.61
6NGOptiliteUS1.16+16A+6UC	Neutral	82	14	14	60	30	1.77	1.45	1.51	1.16	0.71	0.61
6NGOptiliteS83+12A+6C	Neutral	74	12	13	46	20	1.75	1.72	1.48	1.43	0.61	0.53
6NGOptiliteS83+16A+6C	Neutral	74	12	13	46	20	1.78	1.48	1.54	1.23	0.61	0.53
6NGOptiliteUS83+12A+6UC	Neutral	78	12	13	56	24	1.74	1.71	1.47	1.42	0.67	0.58
6NGOptiliteUS83+16A+6UC	Neutral	78	12	13	56	24	1.78	1.47	1.53	1.22	0.67	0.58
6NGOptisolarS70+12A+6C	Blue Grey	61	17	12	38	20	1.86	1.87	1.61	1.61	0.52	0.45
6NGOptisolarS70+16A+6C	Blue Grey	61	17	12	38	20	1.89	1.65	1.66	1.43	0.52	0.45
6NGOptisolarUS70+12A+6UC	Blue Grey	64	18	12	43	27	1.86	1.87	1.61	1.61	0.57	0.50
6NGOptisolarUS70+16A+6UC	Blue Grey	64	18	12	43	27	1.89	1.65	1.66	1.43	0.57	0.50
6NGOptisolarS60+12A+6C	Grey	54	18	11	34	21	1.86	1.87	1.61	1.60	0.47	0.41
6NGOptisolarS60+16A+6C	Grey	54	18	11	34	21	1.89	1.65	1.66	1.43	0.47	0.41
6NGOptisolarUS60+12A+6UC	Grey	56	19	12	40	27	1.86	1.87	1.61	1.60	0.51	0.45
6NGOptisolarUS60+16A+6UC	Grey	56	19	12	40	27	1.89	1.65	1.66	1.43	0.51	0.45
6NGOptisolarS50+12A+6C	Light Grey	44	22	11	28	23	1.85	1.85	1.59	1.59	0.40	0.35
6NGOptisolarS50+16A+6C	Light Grey	44	22	11	28	23	1.88	1.63	1.65	1.41	0.40	0.35
6NGOptisolarUS50+12A+6UC	Light Grey	46	23	11	33	31	1.85	1.85	1.59	1.59	0.43	0.37
6NGOptisolarUS50+16A+6UC	Light Grey	46	23	11	33	31	1.88	1.63	1.65	1.41	0.43	0.37

## 2. Double Silver Low E Insulated Glass

6NGOptisolarD80+12A+6C	Neutral	69	13	13	33	34	1.66	1.60	1.38	1.29	0.43	0.37
6NGOptisolarD80+16A+6C	Neutral	69	13	13	33	34	1.70	1.34	1.44	1.08	0.43	0.37
6NGOptisolarUD80+12A+6UC	Neutral	72	13	14	38	41	1.66	1.60	1.38	1.29	0.45	0.39
6NGOptisolarUD80+16A+6UC	Neutral	72	13	14	38	41	1.70	1.34	1.44	1.08	0.45	0.39
6NGOptisolarD70+12A+6C	Light Blue Grey	61	16	18	31	26	1.71	1.68	1.44	1.38	0.41	0.36
6NGOptisolarD70+16A+6C	Light Blue Grey	61	16	18	31	26	1.75	1.43	1.51	1.19	0.41	0.36
6NGOptisolarUD70+12A+6UC	Light Blue Grey	64	16	18	35	35	1.72	1.69	1.45	1.39	0.43	0.37
6NGOptisolarUD70+16A+6UC	Light Blue Grey	64	16	18	35	35	1.76	1.44	1.51	1.19	0.43	0.37
6NGOptisolarD57+12A+6C	Light Grey	50	15	13	23	30	1.69	1.64	1.41	1.34	0.32	0.28
6NGOptisolarD57+16A+6C	Light Grey	50	15	13	23	30	1.73	1.39	1.47	1.13	0.32	0.28
6NGOptisolarUD57+12A+6UC	Light Grey	53	15	14	26	41	1.69	1.64	1.41	1.34	0.33	0.29
6NGOptisolarUD57+16A+6UC	Light Grey	53	15	14	26	41	1.73	1.39	1.47	1.13	0.33	0.29
6NGOptisolarD49+12A+6C	Blue Grey	45	15	13	21	32	1.69	1.64	1.41	1.34	0.29	0.25
6NGOptisolarD49+16A+6C	Blue Grey	45	15	13	21	32	1.73	1.39	1.47	1.13	0.29	0.25
6NGOptisolarUD49+12A+6UC	Blue Grey	47	15	13	23	44	1.69	1.64	1.41	1.34	0.30	0.26
6NGOptisolarUD49+16A+6UC	Blue Grey	47	15	13	23	44	1.73	1.39	1.47	1.13	0.30	0.26
6NGOptisolarD45+12A+6C	Silver Grey	39	25	15	17	39	1.68	1.63	1.40	1.32	0.24	0.21
6NGOptisolarD45+16A+6C	Silver Grey	39	25	15	17	39	1.72	1.38	1.46	1.11	0.24	0.21
6NGOptisolarUD45+12A+6UC	Silver Grey	41	25	15	18	52	1.68	1.63	1.40	1.32	0.24	0.21
6NGOptisolarUD45+16A+6UC	Silver Grey	41	25	15	18	52	1.72	1.38	1.46	1.11	0.24	0.21

## 3. Triple Silver Low E Insulated Glass

Glass Configuration	Reflective Colour	Visible Light (%)			Solar Energy (%)		US Standard NFRC 2010				SC	SHGC
		Trans %	Reflectance		Trans	Ref	U-value (W/m <sup>2</sup> .K)					
			Outer	Inner			Air		Argon			
							Winter	Summer	Winter	Summer		
6NGOptiselecT70XLVT+12A+6C	Blue Green	67	15	16	26	40	1.62	1.55	1.31	1.19	0.34	0.30
6NGOptiselecT70XLVT+16A+6C	Blue Green	67	15	16	26	40	1.67	1.29	1.37	0.98	0.33	0.29
6NGOptiselecUT72+12A+6UC	Blue Green	71	14	15	29	53	1.63	1.56	1.31	1.20	0.35	0.31
6NGOptiselecUT72+16A+6UC	Blue Green	71	14	15	29	53	1.67	1.29	1.37	0.99	0.35	0.31
6C NGSJ72s-1#2+12A+6C	Neutral	66	11	12	28	38	1.68	1.63	1.48	1.43	0.36	0.31
6C NGSJ52s-1#2+12A+6C	Neutral	53	13	13	22	39	1.66	1.60	1.46	1.40	0.29	0.25
6C NGSJ66s-1#2+12A+6C	Silver Grey	58	11	16	27	28	1.66	1.60	1.46	1.40	0.36	0.31
6C NGLB52s-1#2+12A+6C	Light Grey	51	16	16	20	40	1.66	1.60	1.46	1.40	0.27	0.23
6C GBJ47s-1#2+12A+6C	Silver Grey	44	25	23	17	45	1.66	1.60	1.46	1.40	0.23	0.20
6C NGBJ49s-1#2+12A+6C	Grey	47	20	18	19	42	1.70	1.66	1.50	1.46	0.26	0.23
6C NGSJ65s-1#2+12A+6C	Silver Grey	62	12	12	25	38	1.66	1.60	1.46	1.40	0.32	0.28
6C NGBJ45s-1#2+12A+6C	Silver Grey	35	14	16	13	35	1.66	1.60	1.46	1.40	0.20	0.17

### Notes:

1. Parameter is calculated according to Window 5.2.
2. Actual glass parameter tested might have slice difference with this calculated data sheet.
3. This data sheet is not covering all of our produce range of low e and reflective glass.
4. For more information, please consult our technical sales.





## Switchable Glass

Switchable Glass is a smart glass, which uses an intelligent smart film laminated (sandwich) between 2 layers glass, the smart film can adjust light under electric pressure to switch between transparent and mist, and meet the double requirements of glass on penetrability and privacy protection; lighting is good even when it's not transparent.

**Max Size:** 1820mm × 3500mm

**Thickness:** 7.5mm (3mm+3mm) –39.5mm (19mm+19mm)

**Color:** Transparent, Grey, Blue, Green, Brown

**Shape:** Flat, Curved

**Scope of Application:** High class office, bank, hospital operation room, police office, prison and some monitor room, jewelry shop, museum etc.

**Method of control:** Manual control, manual adjust the light, light control, at customer's requirement.

### 智能玻璃

电控调光玻璃又名调光玻璃,智能调光玻璃,智能玻璃,液晶调光玻璃,电控液晶玻璃。是一款基于 PDLC ( Polymer Dispersed Liquid Crystal ) 液晶技术的高科技夹层玻璃产品,通电透明,断电呈磨砂效果之灰白不透明状。

**电调光玻璃的原理:** PDLC 断电状态下液晶分子呈散射状态,透光但不透明;通电后液晶分子呈直线排列,透光且透明。借助上述原理,制造商将 PDLC 液晶调光膜夹层于两层玻璃之间,制成夹层结构的电控调光玻璃,可控制玻璃之透明及不透明状态,并拥有安全玻璃的一切特性,该产品广泛应用于空间设计,隐私保护及高清投影等众多领域。



### 规格

**最大尺寸:** 1820mm x 3500mm

**厚度:** 7.5mm ( 3mm+3mm )-39.5mm  
( 19mm+19mm )

**形状:** 任何形状皆可,可挖洞

## Mirror

Advanced mirror production line from Italy. Mirror is coated and protected by 3 layers of copper, under-layer and top-layer. The image from mirror is true and clear, bright, anti-humidity, long life circle. It is extensively used in commercial buildings, hotel, shopping mall, etc.

### Feature

**True image:** Untwisted

**High light:** Bright, over 90% light reflective, make room brighter

**Decorative:** Beautiful, wider horizon

**Max size:** 2440mm × 3660mm



### 镜子

由意大利生产线制造的镜面玻璃,镜面施以铜、底漆,面漆三层保护,具有镜面成像清晰逼真、可见光反射光谱丰满、耐潮湿、使用寿命长的特点。适用于各种高级商业场所,豪华酒店、宾馆、商场、体育馆及健美中心。

### 特点

**映像真实:** 映像真实、不扭曲、不变形;

**明亮度大:** 可见光反射率大于90%, 明显增加室内空间的明亮度;

## Oversize Glass

- Oversize Tempered Glass
- Oversize Laminated Glass
- Oversize Insulating Glass

Oversize Glass makes an ideal large-size glass design become a reality, so you do not have to restrict the level of floor size considering suboptimal.

### Application:

External use of show windows, doors, shop fronts in offices, houses, shops etc.

Interior glass screens, partitions, balustrades etc.

Shop display windows, showcases, display shelves etc.

### Capability:

**Max. Size:** 3600mm × 18000mm

**Min. Size:** 300mm × 300mm.

**Quality Standard:** EN12150, ASTM1048,CCC,  
IGCC, IGCC,CSI



## Curved Tempered Glass

Curved glass, which is made of float glass, is firstly heated to softening point on metal mould and then bent to shape by weight of glass itself and outside force, then finally cooled down.

Curved tempered glass/bent glass adopts the similar process with tempered glass, but before the cooling process, using the external power to bend glass to a proper radian according the requirement. The wind pressure resistance of curved tempered glass/bent glass is better than flat tempered glass and other kinds glass for the special shape.

Our curved/bent glass is most famous in glass industry of China. We process curved glass at high accuracy with good quality. Curved glass/bended glass/bent glass can be further processed into insulated glass, tempered and laminated glass, etc.

### Application:

Glass Curtain wall, shower door, Fencing, Skylight roof, indoor arc partition and so on..

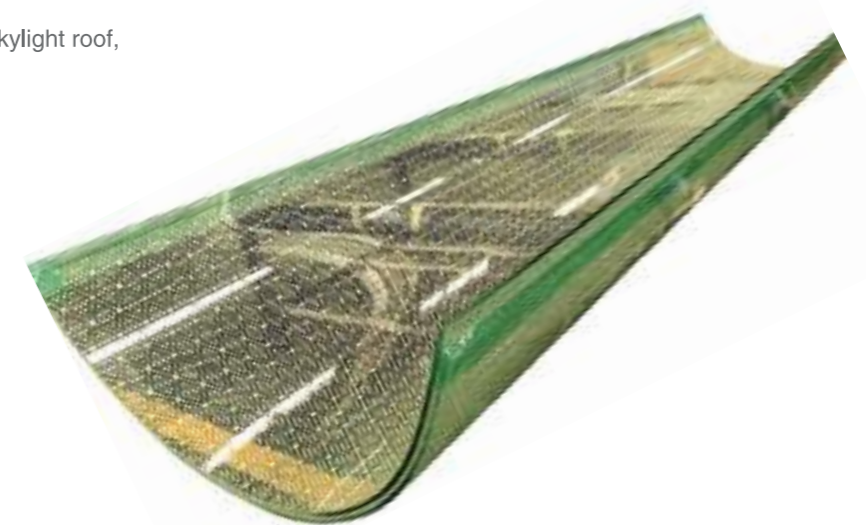
### Capability:

**Thickness:** 5mm–22mm

**Max. Size:** 3600mm × 18000mm

**Min. Size:** 500mm × 500mm

**Min Radius:** 500m



## Hot Curved Glass

Hot curved glass is made by flat glass, it is heated and softened to the shape of mold. Hot curved glass is generally processed in an electric furnace.

The visual appeal is not the only aspect driving designers all over the world towards curved glass. Surprisingly enough, curved glass is also highly efficient when used in structural glazing applications.

Not only that, the arching actually makes it highly load resistant. When used properly, arching also minimizes deflections. In practice, curved glass solutions are excellent in structural applications. And when designed well, they can reduce the use of other building materials.



### Advantage:

Hot curved glass can produce cylinder, cone, "S", "Z", "U", another three-dimensional irregular shape.

### Specification:

We can provide bending glass according to customers requirements.

**Max. Size:** 3300mm\*7500mm

**Min. Size:** 300mm\*300mm

**Radius:** 350mm

**Thickness Range:** 3mm-25mm



## Frosted Glass

Frosted glass is produced by the sandblasting or acid etching of clear sheet glass. It has the effect of rendering the glass translucent by scattering of light during transmission, thus blurring images while still transmitting light.



### 蒙砂玻璃

蒙砂玻璃近年来,作为朦胧的艺术玻璃,为空间装饰增添了美感,可谓是艺术玻璃的新宠儿,为艺术玻璃锦上添花。蒙砂玻璃几乎在装饰空间中无处不在,背景墙,吊顶,餐桌,屏风,玄关,隔断,地面,楼梯,门窗,玻璃茶几……被广泛应用。

# Factory Production Lines

工厂生产线



# Quality Control

## 品质控制

### Processing Quality Control 生产过程质量控制



**Original film storage system**  
原片仓储系统



**Automatic transfer of the warehouse system**  
仓储系统自动传送



**Cutting machine operation**  
切割机操作



**Cutting size check**  
切割尺寸校验



**Cleaning appearance size verification**  
清洗外观尺寸校验



**Tempered size inspection**  
钢化尺寸检验



**Tempered wave detection**  
钢化玻筋检测



**Tempered compression detection**  
钢化应力检测



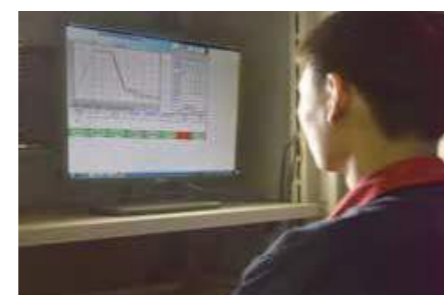
**Tempered fragmentation detection**  
钢化碎片检测



**Tempered /Laminated shot-bag test**  
钢化/夹层霰弹袋实验



**Homogeneous furnace inspection**  
均质炉检验



**Homogeneous furnace system**  
均质炉系统

### Processing Quality Control 生产过程质量控制



**Tempered falling ball impact test**  
钢化落球冲击实验



**IGU make-up inspection**  
中空合片校验



**IGU argon gas detection**  
中空氩气检测



**Molecular sieve heating test**  
分子筛升温实验



**Butterfly test**  
蝴蝶实验



**Tensile test**  
拉断实验



**Dew point test**  
露点实验



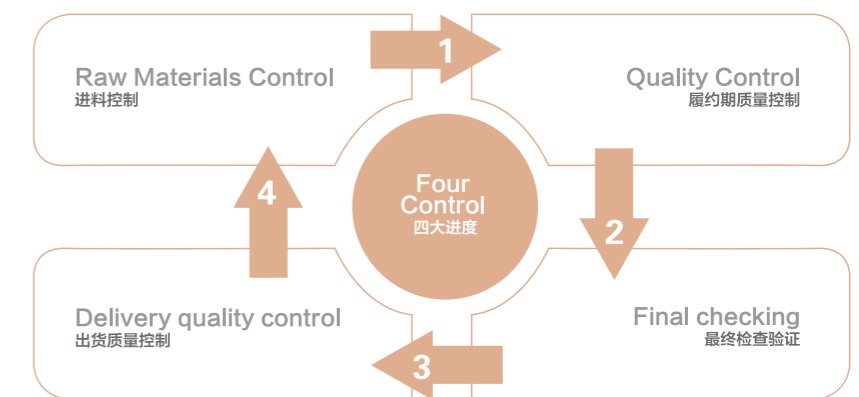
**IGU thickness inspection**  
中空厚度检验



**Laminated piece of temperature control**  
夹胶合片温度控制



**Lamination exterior inspection**  
合片室外观检测





Packing & Loading  
包装&装柜



## Project Case

### ► 工程案例



**Project Name:** Huamin Commercial Center

**Configuration:** 10mm low iron HS+2.28PVB+10mmUD80 HS#4+20Ar 90% aluminum bar+10mm low iron HS+2.28PVB+10mm low iron HS

**Location:** Russia

**Quantity:** 13000sqf



**Project Name:** CAMH

**Configuration:** 6C NGSJ52S-1#2 Triple Silver Low E+12Ar+6C with digital printing

**Location:** Canada

**Quantity:** 120000sqf

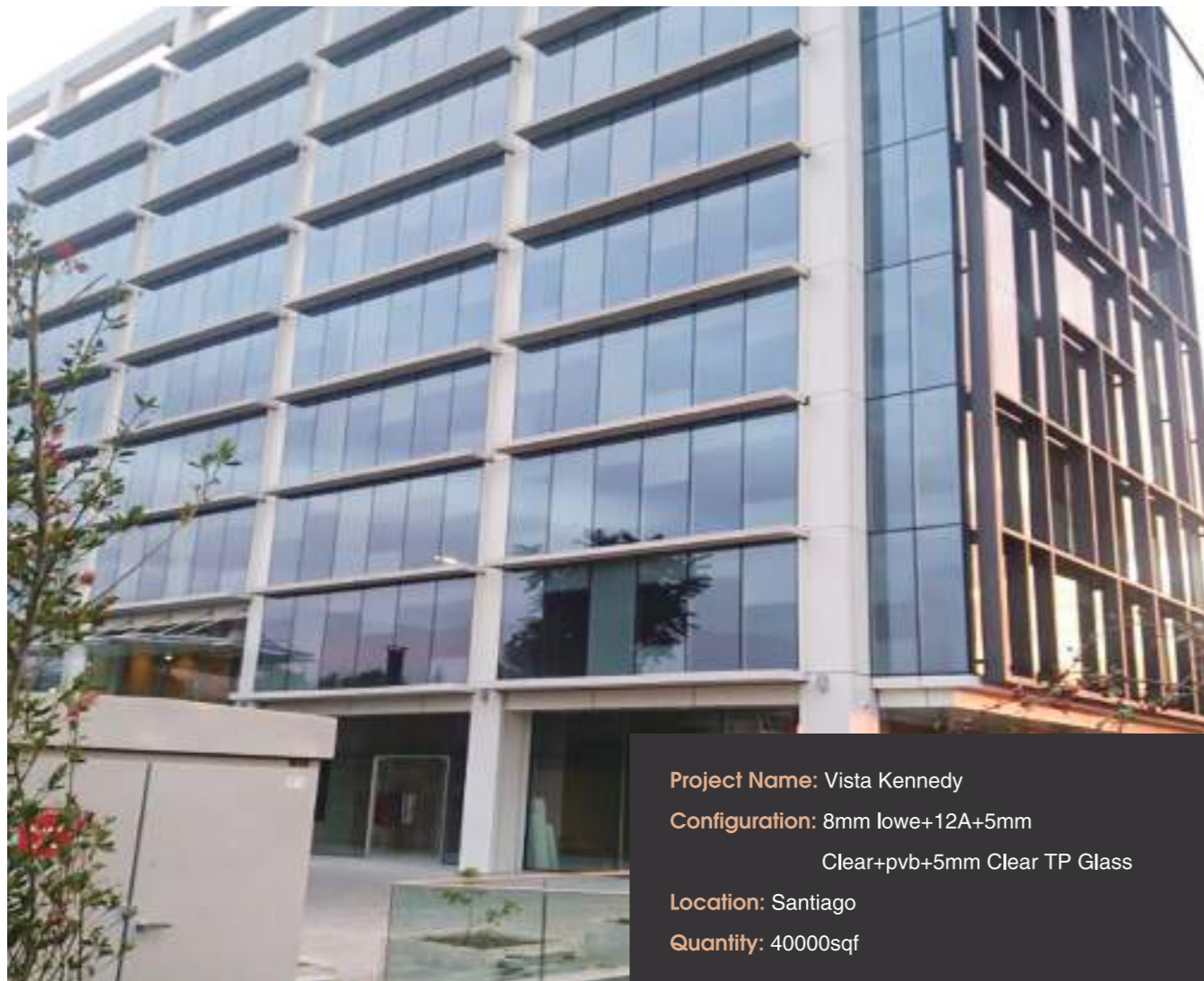




**Project Name:** Wardorf Astoria Hotel  
**Configuration:** 10 Low iron Solarban 72 #2 TP+12 A W black Technoform Spacer(Black) Dow Corning 3362+6 Starphire TP  
**Glass shape:** Flat & Curved glass  
**Quantity:** 85000sqf  
**Location:** Chino, California



**Project :** Opus  
**Configuration:** 8mm Low – E+16A+6mm Clear glass+1.52mm PVB+6mm Clear Glass  
**Location:** Dubai



**Project Name:** Vista Kennedy  
**Configuration:** 8mm lowe+12A+5mm  
 Clear+pvb+5mm Clear TP Glass  
**Location:** Santiago  
**Quantity:** 40000sqf



**Project :** European Central Bank  
**Configuration:** 5mm Clear +1.52mm PVB+6Low–E+16 A+5mm Clear +1.52mm PVB+5mm Clear Glass  
**Location:** Germany



**Project:** Brookfield Place

**Configuration:** 8mm Low Iron Glass+16Ar+6mm Low Iron +1.52mm PVB+6mm Low Iron with Ceramic Frit

**Location:** Canada



**Project:** Royal Hospital Kamloops

**Configuration:** 6mm D80 Low E HS+12A+6C HS+12A+6C TP+6mm PPG Solarban 70 Low E HS+12A+6C HS+12A+6C TP

**Location:** Canada

